

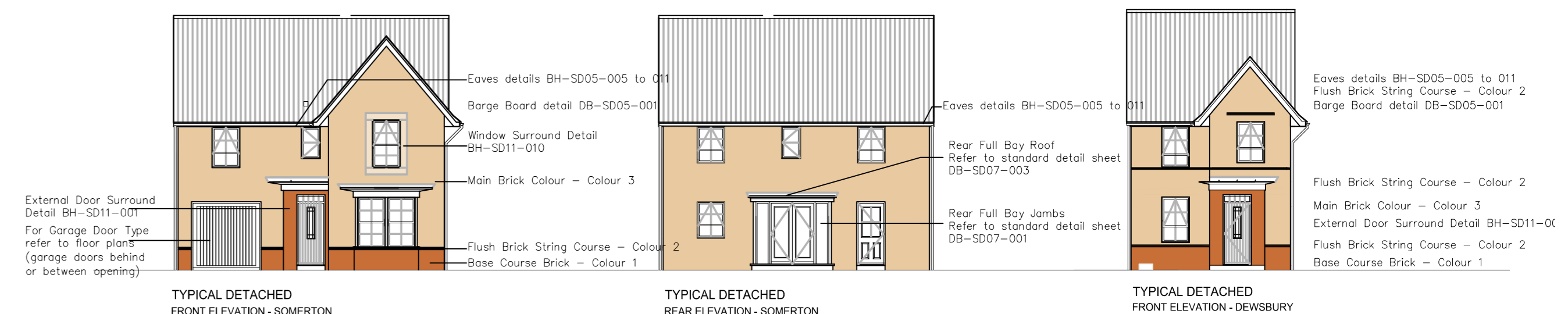


- A** Main Brick - Ibstock Grainger Gold
Detail Brick - Staffordshire red smooth
Plinth Brick - Ibstock Grainger Gold
 - B** Main Brick - Ibstock Grainger Autumn
Detail Brick - Staffordshire blue smooth
Plinth Brick - Ibstock Morpeth Blend
 - C** Main Brick - Ibstock Grainger Antique
Antique Detail Brick - Staffordshire blue smooth
Plinth Brick - Ibstock Grainger Autumn
 - D** Main Brick - Ibstock Morpeth Blend
Detail Brick - Staffordshire blue smooth
Plinth Brick - Ibstock Grainger Autumn
 - E** Main Brick - Ibstock Alnwick Blend
Detail Brick - Staffordshire blue smooth
Plinth Brick - Ibstock Wyllam Old Blend
- A** Russell Grampian Slate Grey
 - B** Russell Grampian Cottage Red
 - C** Russell Grampian Peat Brown
- SURFACE FINISHES
- T** Hot rolled asphalt
 - Hot rolled asphalt red chipping's

Generally

- Soffits & Fascias - White uPVC
- Screen Walls - To match adjoining properties
- Windows - White uPVC
- External Doors, Garages - Pre-finished White, Material to be confirmed
- Rainwater Goods - Black Half-round gutters with round fallpipes

ELEVATION MATERIAL GUIDE



Revision notes:	
Rev:	Date: Revision:
A	28.10.15 Updated to planning layout revision M
B	28.10.15 Updated to planning layout revision P
C	28.07.16 Updated to planning layout revision 2
D	28.10.16 Updated in line with planning layout revision AA. Extent of render amended in line with barratt comments.
E	28.10.16 Render removed.

Drawing Number: 1506/03 TS	Project: Bedewell	Date: 11.05.15	
Client: Barratt Homes Newcastle	Drawing Title: Materials Plan	Scale @ A0: 1:100	
		Revision: E	

STEN ARCHITECTURE
 STEN Architecture Ltd
 Suite 10, Unit 3
 Barratt Office Park,
 Belmont Avenue,
 Hedderley,
 Wakefield,
 WF4 6SA.
 Tel: 01924 688424

Web: www.sten-architecture.co.uk
 Twitter: @STEN_arch
 Facebook: stenarchitecturelltd
 LinkedIn: Sten Architecture